

DEEPCLEAN PREMIER USER GUIDE

47A2, 80R4, 17N4,
36Z9 SERIES

IMPORTANT SAFETY INSTRUCTIONS

READ ALL INSTRUCTIONS BEFORE USING YOUR PORTABLE DEEP CLEANER.

When using an electrical appliance, basic precautions should be observed, including the following:

⚠️ WARNING

TO REDUCE THE RISK OF FIRE, ELECTRIC SHOCK, OR INJURY:

- » Connect to a properly grounded outlet only. See grounding instructions. Do not modify the 3-prong grounded plug.
- » Do not leave appliance when it is plugged in. Unplug from outlet when not in use and before servicing.
- » Use indoors only.
- » Do not allow to be used as a toy. Close attention is necessary when used by or near children.
- » Do not use for any purpose other than described in this User's Guide. Use only manufacturer's recommended attachments.
- » Do not use with damaged cord or plug. If appliance is not working as it should, has been dropped, damaged, left outdoors, or dropped into water, have it repaired at an authorized service center.
- » Always install float before any wet pick-up operation.
- » Do not pull or carry by cord, use cord as a handle, close a door on cord, or pull cord around sharp edges or corners. Do not run appliance over cord. Keep cord away from heated surfaces.
- » Do not unplug by pulling on cord. To unplug, grasp the plug, not the cord.
- » Do not handle plug or appliance with wet hands.
- » Do not put any object into openings. Do not use with any opening blocked; keep openings free of dust, lint, hair, and anything that may reduce air flow.
- » Keep hair, loose clothing, fingers, and all parts of body away from openings and moving parts.
- » Turn off all controls before plugging or unplugging appliance.
- » Use extra care when cleaning on stairs.
- » Do not use to pick up flammable or combustible materials (lighter fluid, gasoline, kerosine, etc.) or use in areas where they may be present.
- » Do not use appliance in an enclosed space filled with vapors given off by oil base paint, paint thinner, some moth proofing substances, flammable dust, or other explosive or toxic vapors.
- » Do not use to pick up toxic material (chlorine bleach, ammonia, drain cleaner, etc.).
- » Do not pick up anything that is burning or smoking, such as cigarettes, matches, or hot ashes.
- » Use only BISSELL cleaning products intended for use with this appliance to prevent internal component damage. See the Cleaning Fluid section of this guide.
- » Unplug before connecting TurboBrush Tool.
- » Do not immerse. Use only on surfaces moistened by the cleaning process.
- » Keep appliance on a level surface.
- » Do not carry the appliance while in use.

SAVE THESE INSTRUCTIONS FOR FUTURE USE

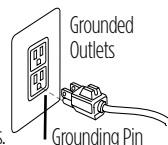
This model is for household use only. Commercial use of this unit voids the manufacturer's warranty.

⚠️ WARNING

Improper connection of the equipment-grounding conductor can result in a risk of electrical shock. Check with a qualified electrician or service person if you aren't sure if the outlet is properly grounded. **DO NOT MODIFY THE PLUG.** If it will not fit the outlet, have a proper outlet installed by a qualified electrician. This appliance is designed for use on a nominal 120-volt circuit, and has a grounding attachment plug that looks like the plug in the illustration. Make certain that the appliance is connected to an outlet having the same configuration as the plug. No plug adapter should be used with this appliance.

GROUNDING INSTRUCTIONS

This appliance must be connected to a grounded wiring system. If it should malfunction or break down, grounding provides a safe path of least resistance for electrical current, reducing the risk of electrical shock. The cord for this appliance has an equipment-grounding conductor and a grounding plug. It must only be plugged into an outlet that is properly installed and grounded in accordance with all local codes and ordinances.



Quick Start Guide

Assembly



1. Slide upper handle onto machine base
2. Screw 2 screws into the marked holes
3. Place upper hose rack onto back of upper handle, and secure with screw
4. Wrap power cord to the left and flex hose to the right of the upper hose rack
5. Attach tool to hose grip



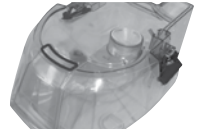
Before you begin cleaning

1. Move furniture to another area if cleaning an entire room
2. Remove large dirt and debris from carpet
3. Pre-treat spots & stains and heavy traffic areas (optional)
4. Fill the clean water tank



- 4a. Unlatch the top by lifting up on the latches on each side of the tank
- 4b. Remove the top

- 4c. Pour 5 ounces of formula into the heavy duty bladder (fill the included measuring cup twice). Fill the rest of the way with hot tap water (do not boil or microwave water).



- 4d. Re-attach top by lining up and securing the latches on the sides of the tank
5. Plug into outlet, and turn the power switch on

NOTE: Heatwave Technology™ helps keep hot water hot while the machine is in use. Simply turn the machine on to activate Heatwave.

Cleaning with attachments

1. Make sure handle of machine is locked in upright position
2. Attach the cleaning tool to the end of the hose
3. Clean by pressing the trigger to spray solution onto the area to be cleaned



4. Slowly scrub the tool back and forth over the soiled surface
5. Tilt the tool forward and release spray trigger to suction liquid

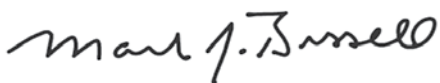
Thanks for buying a BISSELL deep cleaner

We're glad you purchased a BISSELL deep cleaner. Everything we know about floor care went into the design and construction of this complete, high-tech home cleaning system.

Your BISSELL deep cleaner is well made, and we back it with a limited three-year warranty. We also stand behind it with a knowledgeable, dedicated Consumer Care department, so, should you ever have a problem, you'll receive fast, considerate assistance.

My great-grandfather invented the floor sweeper in 1876. Today, BISSELL is a global leader in the design, manufacture, and service of high quality homecare products like your BISSELL deep cleaner.

Thanks again, from all of us at BISSELL.



Mark J. Bissell
Chairman & CEO

Safety Instructions.....	2
Quick Start Guide.....	3
Product View.....	5
Assembly.....	6
Operations.....	6-12
Maintenance & Care.....	13-15
Troubleshooting.....	16
Replacement Parts.....	17
Accessories.....	18
Warranty.....	19
Consumer Care.....	19
Product Registration.....	20

TIPS

- » Deep cleaning stairs and high-traffic areas on a regular basis helps prolong carpet life.
- » Check upholstery stuffing before cleaning. Colored stuffing may bleed through the fabric when it becomes wet.
- » Before turning off the machine, suction up clean water to thoroughly rinse out the interior of the flex hose. Then, lift the cleaning tool and point it upwards to drain any remaining water into the dirty water/ collection tank.

Product View



- 1 Spray Trigger
- 2 Extra Long Power Cord
- 3 Upper Handle
- 4 Flex Hose
- 5 Power Switch
- 6 Easy Carry Handle
- 7 Tank Carry Handle
- 8 Large Capacity 2-in-1 Water Tank

- 9 Surround Suction®
- 10 Easy To Remove Nozzle
- 11 EdgeSweep® Brushes
- 12 Lower Base
- 13 Upper Hose Rack
- 14 Lower Hose Rack
- 15 Handle Recline Pedal

Assembly

Your deep cleaner comes in three (four on select models) easy-to-assemble components:

- Upper Handle with Screws**
- Lower Base**
- Upper Hose Rack**
- Upper Tool Holder (select models)**

The only thing you will need to assemble your cleaner is a Phillips head screwdriver.

1. Slide upper handle onto lower handle.
2. Screw 2 screws into the marked holes (screws will be taped to handle).
3. Attach the upper tool holder (select models) to the upper handle by snapping the bottom half in first, then snapping in the top half.
4. Place upper hose rack onto back of upper handle, and secure with screw.
5. Snap tools onto the Upper Tool Holder (select models).
6. Wrap power cord and flex hose. Snap hose wand into hose clip on upper hose wrap.

NOTE: Take care to wrap the hose in the right direction in order to make use of the hose clip. Make sure the hose is wrapped beginning from the back of the machine and wrapping toward the front.

Deep cleaner assembly is now complete.

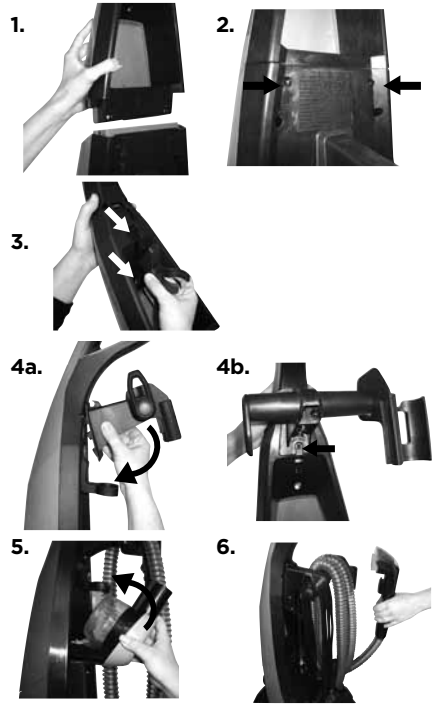
Operations

Cleaning fluid

Keep plenty of genuine BISSELL 2X formula on hand so you can clean and protect whenever it fits your schedule. Always use genuine BISSELL deep cleaning formulas. Non-BISSELL cleaning solutions may harm the machine and will void the warranty.

⚠ WARNING

Do not plug in your deep cleaner until you are familiar with all instructions and operating procedures.



⚠ WARNING

To reduce the risk of fire and electric shock due to internal component damage, use only BISSELL cleaning fluids intended for use with the deep cleaner.

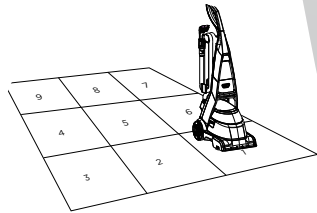
	Professional Deep Cleaning	Pet Stain & Odor	Deep Clean & Protect	Allergen Cleansing	Spring Breeze	Crystal Springs	Hard Floor Solutions	Tough Stain Pretreat
Best for	Cuts through all other formulas	Removes tough pet stains and contains patented odor removal technology	Deep cleans carpets and protects from future stains with Scotchgard™ Protector	Helps remove pet & pollen allergens	Powerful cleaning with a refreshing scent	Powerful cleaning with a refreshing scent	For use with the Bare Floor Tool (select models)	Pretreat to penetrate and loosen tough stains
2X Concentrated	X	X	X	X	X	X	X	
Scotchgard™ Protector	X	X	X					

*ONLY BISSELL Protects from future stains with Scotchgard™ Protector

Operations

Before you clean

1. Move furniture to another area if cleaning an entire room (optional).
2. Pick up all loose dirt, debris, and pet hair before deep cleaning. It is recommended that you vacuum the area prior to deep cleaning.
3. Plan your cleaning route to leave an exit path. It is best to begin cleaning in the corner farthest from your exit.
4. Pretreating (optional) is recommended to improve cleaning effectiveness for heavily soiled carpet in high traffic areas such as entryways and hallways.



BISSELL Tough Stain Pretreat

- a. Spray the BISSELL Tough Stain Pretreat formula onto heavy traffic areas, soiled areas, or stains.
- b. Allow to penetrate for at least 3 minutes.
- c. Clean as normal following the instructions on the next page.



ATTENTION

Some Berber carpets have a tendency to fuzz with wear. Repeated strokes in the same area with an ordinary vacuum or deep cleaner may aggravate this condition. Please see Stain Removal instructions on page 11.

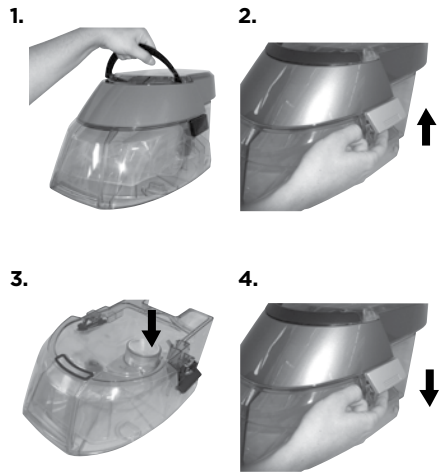
Machine Prep

1. Fill the 2-in-1 Water Tank. Remove the tank from the base of the machine by lifting up the tank carry handle. Carry like a bucket to the sink.
2. Unlatch the top of the tank from the bottom by lifting up on the tank latches on either side of the tank.
3. Using the measuring cup provided, pour 5 oz of BISSELL 2X formula into the heavy duty bladder. Fill the rest of the heavy duty bladder with hot tap water. DO NOT BOIL OR MICROWAVE WATER.

NOTE: Always use genuine BISSELL 2X formulas to maximize cleaning and for the safety of your machine.

4. Place the top of the tank back on the bottom and secure the latches on both sides.

NOTE: Remember to secure the tank latches on either side of the tank and test to make sure they are secure before picking up the tank.



WARNING

To reduce the risk of fire and electric shock due to internal component damage, use only BISSELL cleaning fluids intended for use with the deep cleaner.

Operations

Carpet cleaning

1. Plug into a proper outlet and push the on/off button located on the front of the handle.
2. Recline the handle by pressing on the lever at the back of the machine behind the 2-in-1 water tank.
3. Cleaning Strokes. While pressing the trigger, make one slow forward wet pass and another one back. **Caution: Do not overwet.** Take care not to run over loose objects or edges of area rugs. Stalling brush may result in premature belt failure.

NOTE: Your machine is equipped with a circuit breaker that will automatically shut off the brush if a large or loose object is caught in the brush roll. If that happens, be sure to unplug your machine, remove the foreign object, and then plug the machine back in to reset the circuit breaker.

4. Release the trigger and make one slow forward and backward pass over the same area to remove any residual dirty water and aid in drying. Repeat cleaning passes until solution being pulled up appears clean. Continue passes without pressing the trigger until you can't see any more water being pulled up.



CleanShot® (select models)

CleanShot is an optional feature that can be used to fight tough stains. It can be used as either a tough stain pre-treater or can be used during the deep cleaning process itself. To use CleanShot either as a pre-treat, or during deep cleaning, follow the instructions below.

1. Press the CleanShot button on the front of the machine's handle and aim the focused stream onto the stain for up to 5 seconds.
2. Allow the formula to soak in for 15 seconds.
3. Run the machine over the stain to extract until no formula or water can be seen coming up from the carpet.
4. Repeat as needed until the stain is gone.



Operations

Cleaning with attachments

Your deep cleaner comes equipped with a hose and at least one attachment for cleaning stairs, upholstery, and more.

1. Important! If using to clean upholstery, check upholstery tags.

1. Check manufacturer's tag before cleaning. "W" or "WS" on the tag means you can use your deep cleaner. If the tag is coded with an "X" or an "S" (with a diagonal stripe through it), or says "Dry Clean Only", do not proceed with any deep cleaning machine. Do not use on velvet or silk. If manufacturer's tag is missing or not coded, check with your furniture dealer.

- a. Check for colorfastness in an inconspicuous place.
- b. If possible, check upholstery stuffing. Colored stuffing may bleed through fabric when wet.
- c. Plan activities to allow upholstery time to dry.
- d. Pick up any loose dirt, debris and pet hair before deep cleaning.

2. Follow the instructions on page 7 for filling the 2-in-1 water tank.

3. The DeepClean Premier is designed with an automatic diverter. Simply lock the unit upright in order to clean with the hose.

4. Attach the cleaning tool to the end of the hose.

5. Plug in and turn on the power switch.

6. Clean by pressing the trigger to spray solution onto the area to be cleaned. Slowly move the tool back and forth over the soiled surface. Release the trigger to suction soiled water. Continue to clean in the area, working in small sections, until no more dirt can be removed. Rinse (optional) and suction as needed. **Caution: Do not overwet.**

7. Remove and rinse tools in clean, running water. Dry and replace on the end of the hose.

8. It is recommended that you suction clean water from a bowl to rinse out the hose.

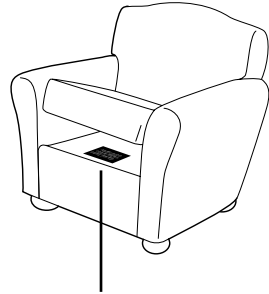
9. Before replacing lift end of hose and stretch out to ensure all water is cleared from hose.

10. Wrap flex hose around the hose rack.

11. Empty 2-in-1 water tank and rinse out, following the instructions on page 10.

WARNING

To reduce the risk of injury, be extra careful when cleaning stairs. Make sure machine is secure and level.



Manufacturer's tag



9.



Operations

Cleaning with the Stain Trapper tool (select models)

Your deep cleaner may have come with a Stain Trapper tool. This tool is great for keeping messes out of the machine's hose system.

1. Attach the Stain Trapper tool to the end of the hose.
2. Gently scrape up any semi-solids with a spoon or spatula. Do not use a knife or other utensil with sharp edges because it could damage the carpet or upholstery.
3. Follow instructions 3-6 on page 9 under "Cleaning with attachments".

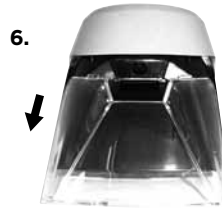
NOTE: Do not fill the Stain Trapper tank above the FULL line.

4. To empty the Stain Trapper tool, rotate the small tank on the bottom of the tool to unlock it.

NOTE: Be careful to keep the top of the tool facing upward or soiled water will spill out of the tank.

5. Dump dirty water into a sink or toilet and rinse the tank out with clean water. Replace the tank by lining up the "unlock" symbol with the small arrow on the tank and turning it to the "lock" symbol.

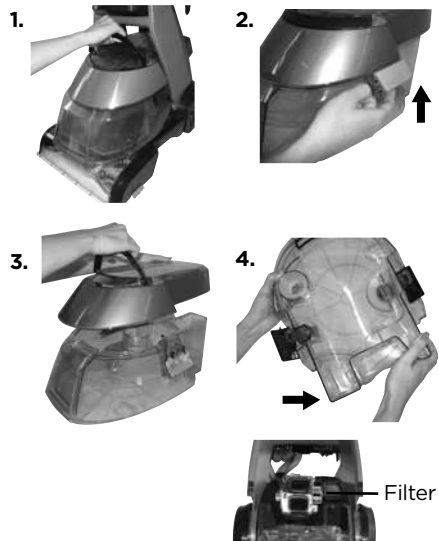
6. Clean the front of the tool by removing the plate over the suction path. Pull down on the bottom of the plate to remove. Run the tool and the plate under clean water to rinse taking care to remove all debris. Replace the front plate by sliding it back into place.



Clean-up

1. Remove the tank from the base of the machine by lifting up on the tank carry handle. Carry like a bucket to a utility sink or outside where you will dispose of the dirty water.
2. Unlatch the top of the tank from the bottom by lifting up on the tank latches on either side of the tank.
3. Remove the top of the tank by lifting up on the handle.
4. Lift the bottom portion of the tank; pour out dirty water in the sink through the rectangular shaped opening in the corner of the tank.

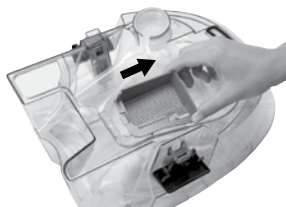
NOTE: You may notice hair & debris deposits on the carpet or in the tank that were loosened by the cleaning action. This debris should be picked up and thrown away. Check the red lint filter near the duct on the back of the machine base for debris and remove before continuing.



Operations

5. Empty the Pet Hair Basket (select models) by sliding it toward the front of the tank and lifting up. Replace the Pet Hair Basket before storing/continuing to clean.

5.



6. Fill the heavy duty bladder with clean hot tap water, following instructions on page 7.

NOTE: Remember to secure the tank latches and test to make sure it is secure before picking up the tank.

7. Water rinse (recommended). Rinsing is an optional step that can be done during the cleaning process or after the carpeted area has been completed. Empty the heavy-duty bladder if necessary, and refill with hot tap water only. Replace the tank on the machine. Take care to do a forward (wet) stroke by depressing the trigger, and a backward (wet) stroke, followed by a forward and backward (dry) stroke, releasing the trigger. Continue this until the water you see coming up the nozzle is clear. (See page 13 for more machine care tips.)

Stain removal

Do Not Delay! Attending to an accident soon after it occurs ensures the most optimal clean. Leaving it for an extended period of time may cause it to set and become permanent.

1. Blot up liquids with an absorbent cloth or paper towels. White materials are recommended because certain dyes may bleed and make the stain worse.

2. Gently scrape up any semi-solids with a spoon or spatula. Do not use a knife or other utensil with sharp edges because it could damage the carpet or upholstery.

3. If the area has already dried, separate and remove from the carpet whatever semi-solids and residue that can be accessed before deep cleaning.

4. Be sure to test any spot removal formulas in an inconspicuous area first. This is important as some dyes and materials could be damaged or discolored by cleaning solvents. If such a change should occur, try a different solution or call a professional.

5. If cleaning on Berber carpeting, gently run your machine over a hidden area. If no fuzzing occurs, continue cleaning in soiled area.

6. Using the BISSELL Tough Stain Pretreat, spray evenly over soiled area. Do not overwet. Wait 3-5 minutes. Gently work the solution by blotting area with a clean, damp, color safe cloth.

7. Clean large areas with the DeepClean Premier machine or use the hose to clean spots, stains and hard-to-reach areas.



Operations

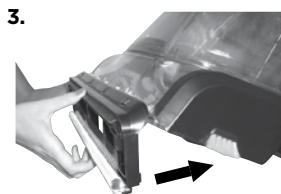
Hard floor cleaning (select models only)

Your DeepClean Premier model may have come with a hard floor attachment and 2X Hard Floor Solutions Formula. If not, these products are available for purchase by contacting the BISSELL Consumer Care department by phone or at the website. The hard floor tool provides effective cleaning for linoleum, vinyl, and tile floors. **Caution: Do not use on unsealed hardwood floors.**

1. Vacuum or sweep thoroughly to pick up any loose debris and pet hair.
2. Move any furniture, if needed.
3. Attach the hard floor tool onto the bottom of the machine by hooking it into the nozzle and swinging it down until it clicks into place.
4. Follow instructions on page 7 to fill the 2-in-1 water tank.
5. Plug into an outlet and turn the power switch ON.
6. Slowly move the machine forward and back over hard floor surface one time while depressing trigger. **Caution: Do not overwet.**
7. Repeat the motion without pressing the trigger using the hard floor tool to squeegee and suction up the dirty water.
8. Allow adequate time for floors to dry.
9. Remove hard floor tool, rinse and dry before storing.

WARNING

To reduce the risk of fire and electric shock- when cleaning a hard floor, the BISSELL bare floor tool 160-0208 must be used and it must only be used with BISSELL 2X Hard Floor Solutions cleaning fluid intended for use with this appliance.



Machine storage

Once your cleaning is complete, make sure the 2-in-1 water tank is emptied, rinsed out, and dried before the next use.

NOTE: Store cleaner in a protected, dry area. Since this product uses water, it must not be stored where there is a danger of freezing. Freezing will damage internal components and void the warranty.

Maintenance & Care

Machine care

For best results, a few simple steps can assure your machine is well maintained after your cleaning is complete.

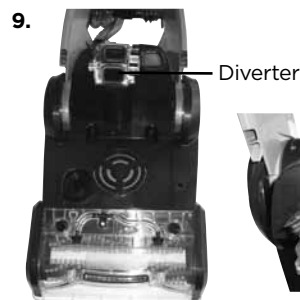
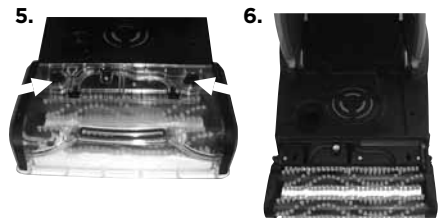
1. Flush your machine of any remaining residual solution.
 - a. Fill the 2-in-1 water tank with clean hot tap water.
 - b. Recline the handle and press the spray trigger for 15 seconds while making forward and backward passes on carpet. Release the trigger to suction. Repeat for another 15 seconds. Continue without pressing the trigger until there is no more water being suctioned.
2. Push the power button to turn the machine off. Unplug the machine and wrap the power cord. Empty the 2-in-1 water tank.
3. Rinse out 2-in-1 water tank with hot tap water, taking care to clean underneath the heavy duty bladder and all around it.
4. The top half of the tank can be rinsed clean through the nozzle area. Clear the red filter of any debris that may have accumulated.
5. Keeping the 2-in-1 water tank off the base of the machine, simply remove the floor nozzle by turning the locking keys (see image for location) to the "unlock" position and lift up. Rinse the floor nozzle at the faucet.
6. Any loose hair or debris can be pulled from the brush rolls and thrown away. For the most thorough clean before storage, follow directions below for removal and replacement of the brush rolls and belts.
7. Replace nozzle by lining up the locking keys with their slots and placing the nozzle and end caps back onto the foot of the machine. Secure into place by turning the locking keys to the "lock" position.
8. To clean attachments that may have been used, remove from hose and rinse under clean, running water. Dry and replace attachment in the hose rack. Clean the hose by suctioning clean water from the tap. Before replacing, lift end of hose and stretch out to ensure all water is cleared from hose. Refer to page 9.
9. To clean the suction diverter, remove the two screws on the back of the diverter housing. Take the diverter housing to a sink and rinse it with water. Take care to remove any debris that may build up and cause a clog. Replace the diverter housing and the two screws.
10. After carpet is dry, vacuum again to remove hair and fuzz.

Tip

» Let all parts dry completely before storing

⚠️ WARNING

To reduce the risk of electric shock, turn power switch off and disconnect plug from electrical outlet before performing maintenance or troubleshooting checks.

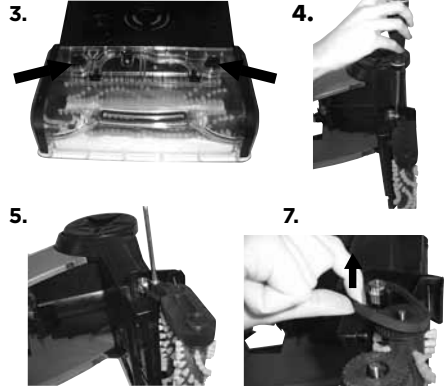


Maintenance & Care

Drive belt removal & replacement

Occasional replacement of one or both belts may become necessary. If that is needed, please follow the instructions below.

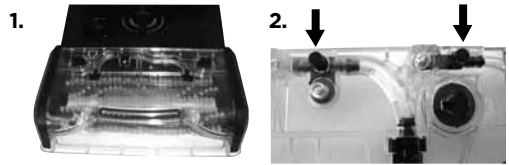
1. Turn off the machine, and unplug it from the outlet.
2. Remove the 2-in-1 water tank. Set aside.
3. Remove the nozzle and end caps by following the instructions in Step 5 on page 13.
4. Turn the machine on its side.
IMPORTANT: cord side up.
5. Remove 1 silver screw from the pivot arm.
6. Remove pivot arm by gently lifting up.
7. Remove the drive belt and replace it by first attaching it to the small drive wheel, then attach it to the end of the inside brush.



Fluid Connection Point Filter Maintenance

Periodic cleaning of the fluid connection point in the spray nozzle may be required.

1. To clean the fluid connection point, remove the nozzle and turn it over.
2. Clean the filter on the end of the fluid connection point with a small paperclip and re-attach the nozzle to the machine.



Maintenance & Care

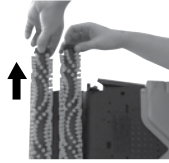
Brush removal and brush belt replacement

Brushes can be removed for cleaning or replacement as needed.

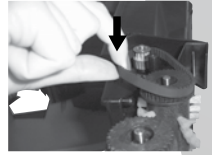
1. Follow drive belt removal Instructions on page 14.
2. Remove brush rolls by pulling them off of the metal rods. Be careful not to lose the small washer at each end of the brush rolls.
3. Replace the brush belt if necessary.
4. Place cleaned or new brush rolls back onto the rods. Make sure one washer is on each end of the rollers prior to sliding onto the rod. Be sure to let the rod slide through the bushing to insure proper fit.
5. Re-attach the brush belt on the bottom to the cogs of the small roller brushes.
6. Replace the drive belt by following step 8 on page 14.
7. Place pivot arm in place and screw in place using the silver screw.
8. Replace nozzle by lining up the locking keys with their slots and placing the nozzle back onto the foot of the machine. Secure into place by turning the locking keys to the "lock" position.

If you have any questions or are having trouble installing or replacing your belt(s) or brushes, please call BISSELL Consumer Care.

2.



5.



7.



Troubleshooting

WARNING

To reduce the risk of electric shock, turn power switch off and disconnect plug from electrical outlet before performing maintenance or troubleshooting checks.

Problem	Possible causes	Remedies
Reduced spray or no spray	Water tank may be empty	Fill heavy duty bladder with hot tap water
	Tank may not be seated completely	Turn power OFF. Remove and reseat tank
	Pump may have lost prime.	Turn power OFF and then back ON. Wait one minute, then depress trigger
DirtLifter® PowerBrush does not turn	The belt is off or broken	Turn power OFF and unplug unit from outlet. Follow instructions on page 15
	Circuit breaker on machine may have tripped	Turn the machine OFF and unplug from outlet. Check to see if foreign object is caught in brush roll. Remove object. Plug machine in to reset circuit breaker
Cleaner not picking up solution	Tank may not be seated properly	Pick up the 2-in-1 water tank and re-seat it so it sits snugly on the unit.
	Tank may not be assembled properly	Make sure the tank latches on both sides of the tank are latched properly. To make sure they are both latched properly, pick the tank up by its handle.
	2-in-1 water tank is empty	Check fluid levels in heavy-duty bladder.
	2-in-1 water tank has picked up maximum dirty water and red float door has closed.	Empty 2-in-1 water tank. Refill heavy duty bladder with clean hot tap water and replace.
	Red float "door" in the tank may have closed as a result of bumping object or moving machine back and forth too quickly	Turn the machine OFF , allowing red float door to release an into the open position. Turn unit back ON to continue cleaning. Be sure your forward and backward strokes are done at a slower pace.
	Red lint screen near air duct is dirty	Follow cleaning instructions in Step 4 on Page 13.

Please do not return this product to the store.











Other maintenance or service not included in the manual should be performed by an authorized service representative.

Thank you for selecting a BISSELL product.

For any questions or concerns, BISSELL is happy to be of service. Contact us directly at 1-800-237-7691.

Replacement Parts

These items are available for your BISSELL DeepClean Premier deep cleaner.
Call 1-800-237-7691 or visit www.BISSELL.com

PART #	PART NAME		PART #	PART NAME	
160-0087	Tank Lid (Blackberry Purple)		160-0092	Tank Bottom	
160-0097	Tank Cap & Insert Assembly		160-0098	Floor Nozzle with End Cap Assembly	
203-6845	Float Door		160-0209	Measuring Cup	
160-0104	Brush Roll – 6 row (includes 1 Brush, Axle, 2 Swivel Arms)		203-6688	Small Brush Belt (right side)	
160-0105	Large Brush Belt (left side)		160-0079	Upper Hose & Cord Wrap	

*Not all parts are included with every model.

Accessories

These items are available for your BISSELL DeepClean Premier deep cleaner.
Call 1-800-237-7691 or visit www.BISSELL.com

PART #	PART NAME		PART #	PART NAME	
203-6651	3" Tough Stain Tool		203-6652	Powered TurboBrush® Hand Tool	
203-6653	4" Upholstery Tool		203-6654	6" Stair Tool	
203-6655	Spraying Crevice Tool		160-0208	Bare Floor Tool	
203-7412	Deep Reach Pet Tool		160-0057	Stain Trapper Tool	
62E5-2	2X Deep Clean and Protect Formula with Scotchgard™ Protection 60 oz.		99K5-2	2X Pet Stain and Odor Formula with Scotchgard™ Protection 60 oz.	
8905-2	2X Allergen Cleansing Formula 60 oz.		26V2A	2X SpringBreeze Formula 60 oz.	
78H6-3	2X Professional Deep Cleaning Formula with Scotchgard™ Protection 48 oz.		56L9	2X Hard Floor Solutions Formula 16 oz.	
4001	Tough Stain PreTreat 22 oz.		7919-3	2X Crystal Springs Formula 60 oz.	

*Not all parts are included with every model.

Warranty

This warranty gives you specific legal rights, and you may also have other rights which may vary from state to state. If you need additional instruction regarding this warranty or have questions regarding what it may cover, please contact BISSELL Consumer Care by E-mail, telephone, or regular mail as described below.

Limited Three-Year Warranty

Subject to the *EXCEPTIONS AND EXCLUSIONS identified below, upon receipt of the product BISSELL will repair or replace (with new or remanufactured components or products), at BISSELL's option, free of charge from the date of purchase by the original purchaser, for three years any defective or malfunctioning part.

See information below on "If your BISSELL product should require service".

This warranty applies to product used for personal, and not commercial or rental service. This warranty does not apply to fans or routine maintenance components such as filters, belts, or brushes. Damage or malfunction caused by negligence, abuse, neglect, unauthorized repair, or any other use not in accordance with the User's Guide is not covered.

BISSELL IS NOT LIABLE FOR INCIDENTAL OR CONSEQUENTIAL DAMAGES OF ANY NATURE ASSOCIATED WITH THE USE OF THIS PRODUCT. BISSELL'S LIABILITY WILL NOT EXCEED THE PURCHASE PRICE OF THE PRODUCT.

Some states do not allow the exclusion or limitation of incidental or consequential damages, so the above limitation or exclusion may not apply to you.

*EXCEPTIONS AND EXCLUSIONS FROM THE TERMS OF THE LIMITED WARRANTY

THIS WARRANTY IS EXCLUSIVE AND IN LIEU OF ANY OTHER WARRANTIES EITHER ORAL OR WRITTEN. ANY IMPLIED WARRANTIES WHICH MAY ARISE BY OPERATION OF LAW, INCLUDING THE IMPLIED WARRANTIES OF MERCHANTABILITY AND FITNESS FOR A PARTICULAR PURPOSE, ARE LIMITED TO THE THREE YEAR DURATION FROM THE DATE OF PURCHASE AS DESCRIBED ABOVE.

Some states do not allow limitations on how long an implied warranty last so the above limitation may not apply to you.

NOTE: Please keep your original sales receipt. It provides proof of date of purchase in the event of a warranty claim.

Service

If your BISSELL product should require service:

Contact BISSELL Consumer Care to locate a BISSELL Authorized Service Center in your area.

If you need information about repairs or replacement parts, or if you have questions about your warranty, contact BISSELL Consumer Care.

Website or E-mail:

www.BISSELL.com

Or Call:

BISSELL Consumer Care
1-800-237-7691

Monday - Friday 8am - 10pm ET

Saturday 9am - 8pm ET

Sunday 10am - 7pm ET

Or Write:

BISSELL Homecare, Inc.

PO Box 3606

Grand Rapids, MI 49501

ATTN: Consumer Care

Register your product today!

Registering is quick, easy and offers you benefits over the lifetime of your product.

You'll receive:

BISSELL Rewards Points

Automatically earn points for discounts and free shipping on future purchases.

Faster Service

Supplying your information now saves you time should you need to contact us with questions regarding your product.

Product Support Reminders and Alerts

We'll contact you with any important product maintenance reminders and alerts.

Special Promotions

Optional: Register your email to receive notice of offers, contests, cleaning tips and more!

Visit www.BISSELL.com/registration now!

BISSELL Consumer Care

For information about repairs or replacement parts, or questions about your warranty:

Call:

BISSELL Consumer Care
1-800-237-7691

Monday - Friday 8 am - 10 pm ET
Saturday 9 am - 8 pm ET
Sunday 10am - 7pm ET

Write:

BISSELL Homecare, Inc.
PO Box 3606
Grand Rapids MI 49501
ATTN: Consumer Care

Visit the BISSELL website: www.BISSELL.com

When contacting BISSELL, have model number of cleaner available.

Please record your Model Number: _____

Please record your Purchase Date: _____

NOTE: Please keep your original sales receipt. It provides proof of purchase date in the event of a warranty claim. See Warranty on page 15 for details.

We can't wait to hear from you!

Rate this product and let us (and millions of your closest friends) know what you think!

www.BISSELL.com



©2012 BISSELL Homecare, Inc.
Grand Rapids, Michigan
All rights reserved. Printed in China
Part Number 120-4589 Rev 11/12
Visit our website at: www.BISSELL.com